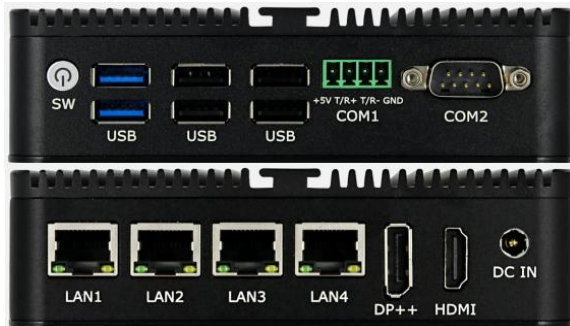


SPC-M2042 Mini PC



Features :

- Low power consumption, Aluminum fanless design
- Intel N95/N100/N200/N300
- 1xDDR4 SODIMM,Max 16G
- 4x2.5G Lan
- 1xRS-232, 1xRS-485

Specification

Model Name	SPC-M2042
CPU	Intel® Alder Lake-N N95/N100/N200/N300
RAM	1x DDR4 SODIMM, Max 16GB
Storage	1x MSATA, 1x SATA, 1x M.2 NVME
Network	4x RJ45 Intel i225V/ i226V
Display	1x DP1.4, 1x HDMI2.0
I/O ports	4x USB2.0, 2x USB3.0, 1xRS232, 1xRS485(4 Pin Phoenix terminal)
Expansion	1x M.2 WIFI
Power Supply	DC 12V
OS	Windows10/11, LINUX
Storage Temp	-20℃~+70℃
Storage Humidity	0-95% non-condensing
Work Temp	-10℃~+60℃
Installation	Desktop, wall-mounted, etc.
Size	135x127x38.7MM
Weight	1KG
Other	Support Watchdog, Diskless boot

SPC-M2042 Drawing

