

Storage Chassis Series

CPKI-N212RM-L

2U storage chassis with 12x3.5" Hot-swap HDD



Introduction

CasePro CPKI-N212RM-L is a 2U chassis with the storage, cooling and functionality of larger cases, 4*8cm Hotswap fans to provide the best cooling system

Application references

- Best recommended
- Corporate File Server
- Data Retention & Archives
- Data Warehousing System
- DB/File Server
- Media/Streaming server
- Mobile Internet Service System
- Security & Surveillance System
- Vedio-on-Demand



Features and Benefits

- ▶ Strong structure with outstanding thermal 4 x 80 mm middle fans
- ▶ 12*3.5" Hotswap SATA / SAS / minisas
- ▶ Support 2U single or 2U miniredundant PSU

Specification

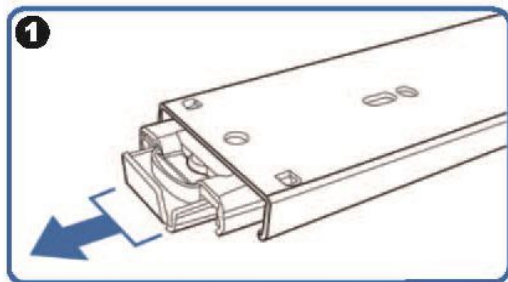
Dimension (W*H*D)	19"*3.5"*26.78" / 482*89*680 (mm)
Material Construction	Heavy-duty & Rugged Steel 2.0mm front bezel Hi-end Anti-rusty
M/B Size	EATX
Expansion	7 slots low profile
Control & Indicator	1*Power switch +1* Reset switch 1 x LED (power) +2 x LED (HDD)+1 x LED (LAN) 1 x USB2.0
Cooling Fans	4*8038 PMW Fanwall in middle
DriveBay	12 x hotswap 3.5/2.5
Backplane	6GB mini SAS (support SATA/SAS)
Power Supply	2U Single or 2U Redundant
Sliding rail	26" ball bearing sliding rail (option)
Color	Black
Operation Temperature	Up to 50C (122°F)
Operation Humidity (Non-condensing)	Up to 90%
Packing Measurement CBF / CBM	2.5 / 0.07
Packing N.W / G.W	14KGS / 16KGS

Option: Three-Sections Heavy-Duty Solid Ball-Bearing Sliding Rails

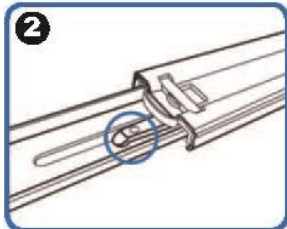
Model: RB26

Features: Universal Design to match almost all chassis on market, Heavy-Duty Slide Ball Bearing
Built-in stop-latch, lock chassis in extended position for easy access ,
Simply pressing on the plastic levers on each side and slide your case back into the cabinet

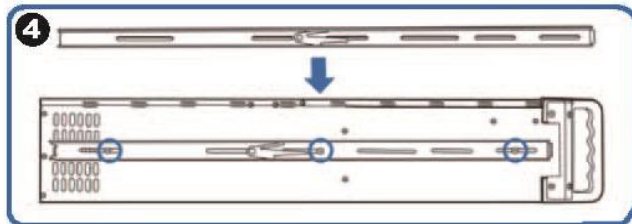
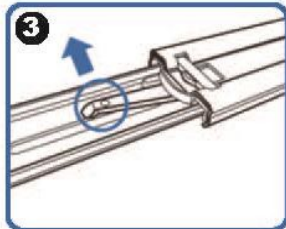
Warranty: 1 Year



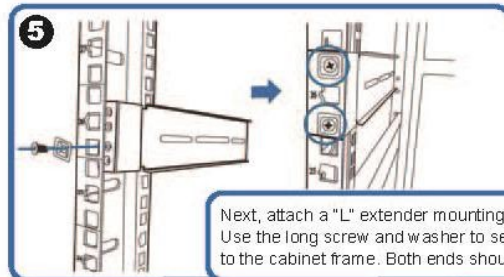
(Pull the center slide all the way out until it reaches the end)



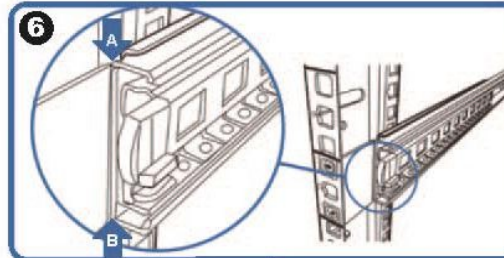
You will see a locking clip at the end point of the center slide. Push it down and unlock the center slide.



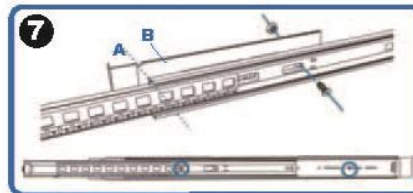
Now put the center slide right next to the rackmount chassis. You should be able to find screw holes on both sides of chassis. Holes are used for mounting the center slide. Later the center slide will be use for attaching the sliding rail.



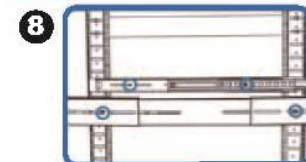
Next, attach a "L" extender mounting bracket on to the cabinet. Use the long screw and washer to secure the "L" extender bracket or to the cabinet frame. Both ends should have the extender bracket.



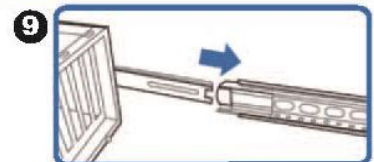
Align front outer rail to the indent of L bracket between Point A & B.



Secure outer rail to L bracket with crews and nuts.



Repeat previous steps to secure sliding rails on both sides.



Reattach inner rail back to center rail.