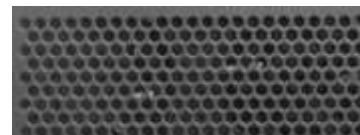


Ultra compact Series

CP-N338C

3U Ultra compact Rackmount / Desktop chassis CPKI-N338C Depth390mm



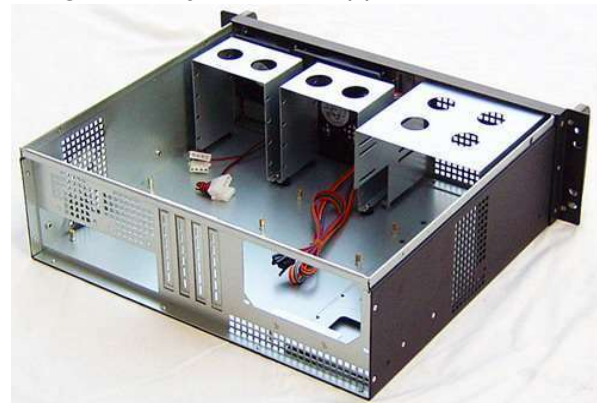
Option for Six angle hole

Introduction

CP-N338C is a ultra compact chassis with 15" depth ,max 3*5.25+4x3.5" HDD space for wide range application
Support ATX PS2 powersupply for regular server

Features and Benefits

- Support (2+1)*5.25 space+4x3.5" HDD space
- High density chassis support ATX / Micro ATX Motherboard and PS2 ATX Powersupply



Specification

Dimension (W*H*D) 19"*5.25"*15.35"/ 482*133.3*390 (mm)

Material Construction Heavy-duty & Rugged steel 1.0mm

M/B Size 12 x 9.6 (ATX, microATX, mini-ITX)

1. When ATX MB installed, the available 5.25" driver bay will reduce to 2 bays, because the ATX MB and the bottom 5.25" conflict.
2. When Micro ATX MB installed, the 5.25" driver bay will be 3 bays

Expansion 4 slots full height rear side ATX

1*Power switch +1* Reset switch

Control & Indicator 1 x LED(power) +2 x LED(HDD)

2*3.0 USB

Cooling Fans 2 x 8025 fan in take + 2x6025 at rear(option)

DriveBay 3*5.25 +4 x 3.5"(Internal)

Power Supply PS-2 ATX powersupply

Sliding rail 20" ball bearing sliding rail (option)

Color Black / Red / Bule / Green / Silver

Operation Temperature Up to 50C (12℉)

Operation Humidity (Non-condensing) Up to 90%

Packing Measurement CBF / CBM 2.5/ 0.07

Packing N.W / G.W 6.0KGS / 7.5KGS

